

**N E W**

**OMRON**

# Safety Laser Scanner F3G-C



**Increases Safety by Detecting Workers to Warn  
of Proximity to Dangerous Area**



***Innovation  
in the Solution Age***

OMRON INDUSTRIAL AUTOMATION

# Increases Safety by Detecting Workers t

## Prevents Robot from Restarting When Worker Is in Protect

### >> Detection of Worker Prevents Unexpected Operation of Machinery

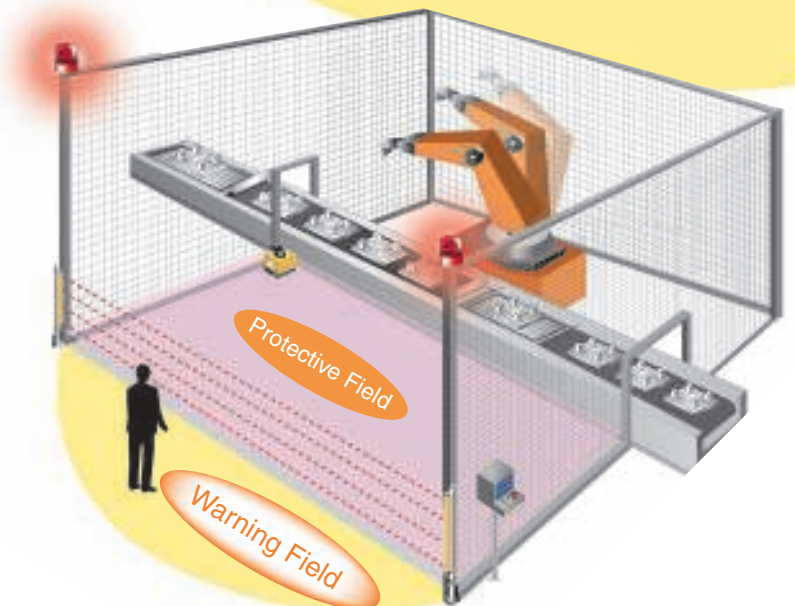
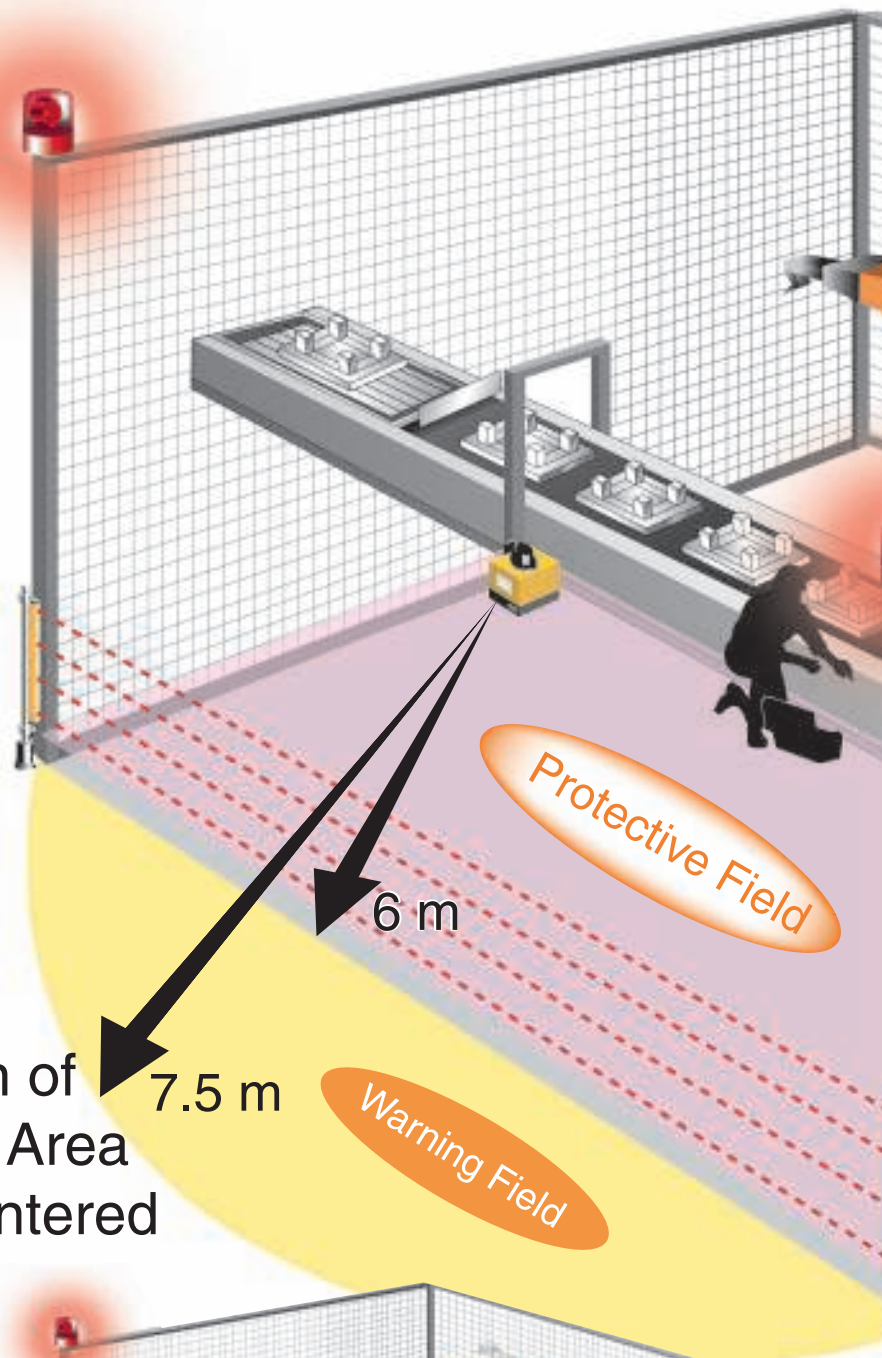
Ensuring safety is based on the principle that machinery will not start when a worker is present in the robot's operating zone or in the area around the machinery. A Safety Light Curtain or Door Switch detect when a worker enters the dangerous area, but once this zone is entered, the worker's presence cannot be monitored.

The F3G-C Safety Laser Scanner uses a laser beam to scan across a two-dimensional plane for the presence of workers in the designated area, acting as a reflective safety area sensor.

### Warning Indicators Warn of Approach to Dangerous Area If the Warning Field Is Entered

### >> Proximity Alarm Prevents Stopping Machinery Inadvertently

In addition to setting a protective field to prevent the operation of machinery, a warning field can also be set in which the detection of a worker approaching the machinery triggers an alarm. Entering or leaving the warning field is connected to warning indicators and sirens that alert the worker, thereby protecting against the unintentionally stopping machinery by approaching the source of danger.



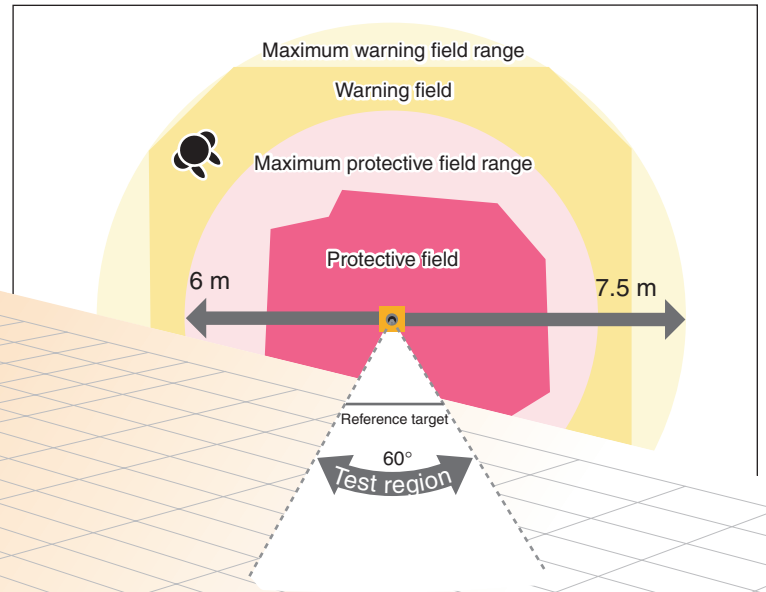
## Wider Scan Area

## Wider Scan Area

### Sensing Range

Long-range sensing is provided up to a 6-m radius for the Protective Field and a 7.5-m radius for the Warning Field.

The zone dimensions and shape settings are defined by the user with the software provided with the Sensor.



### Scanning Angle

Generally, safety laser scanners have a scanning angle of 180° to 190°, but the F3G-C can sense movement within a 300° range.

For example, normally two scanners would be required to monitor two surfaces of a large machine, but only one F3G-C Scanner is required if it is installed at the corner of the machine.



## Easy Setup

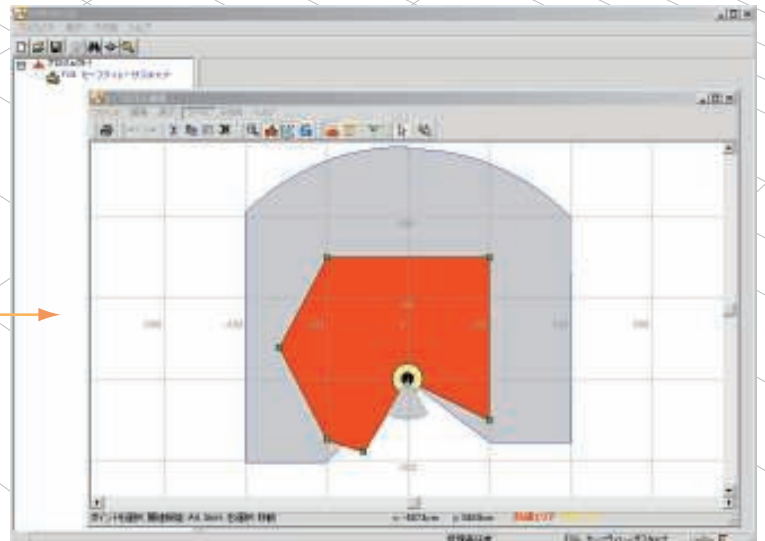
## Easy Setup

The Protective Field and Warning Field can be easily set up from a personal computer using the CSL Setup Software provided with the Scanner.

Settings can be protected from changes by using a password, preventing unintentional changes.





The system requirements for running CSL Setup Software are as follows:

- CPU: Intel Pentium PC, 233 MHz or higher
  - RAM: 64 MB or higher
  - RS-232C: Serial interface\*
- \* The software may not function properly if a USB/RS-232C Serial Conversion Adapter is used.
- OS: Microsoft Windows 95, 98, NT 4.0, ME, 2000 Professional, or XP
  - CD-ROM drive



# F3G-C1R70

## List of Models

Appearance	Product name	Model	Remarks
	Sensor	F3G-C1R70	Includes setup software CD.
	Power supply cable	F39-JG5A	One cable required for each Sensor.
	Communications cable	F39-JG5R	Required for setup only.
	Mounting Bracket (sold separately)	F39-LG1	Includes the following items. Main bracket: 1 Side bracket (left): 1 Side bracket (right): 1 M8 Allen-head bolts: 4 M8 plain washers: 4

## Ratings and Performance

Item	Model	F3G-C1R70
Safety category		Conforms to Type 3 ESPE EN/IEC 61496-1
Sensing range (includes safety supplement)		Protective field: 0 to 6 m Warning field: 0 to 7.5 m
Scanning angle		300°
Detection capability		Non-transparent, 70 mm in diameter (reflective rate of 1.8% min.)
Response time		280 ms max.
Reactivation time		200 to 5,000 ms (adjustable)
Supply voltage		24 VDC ±25% (ripple: 5 V p-p max, except for voltage drop due to cable extension)
Power consumption		24 W
Light source		Infrared Laser Diode (wavelength: 905 nm)
Laser protection class		Laser class 1 product conforms to the following standards: EN 60825-1, IEC 825-1, JIS C 6802, and 21 CFR 1040.10
Control output (output signal switching device)		Relay output: SPST-NO contact × 2 outputs, 30 V, 2 A (cosφ=1) max. Switch life expectancy: 2,000,000 operations
Warning output (non-safety output)		Relay output: SPST-NO contact, 30 V, 2 A (cosφ=1) max. Switch life expectancy: 2,000,000 operations
Protection		Control circuit: 3.15-A fuse (medium slow blow) Output: 2-A self-resetting fuse
Connection method		Power supply, output: 8-pin round connector (manufactured by Binder, 423 Series) Computer connection: 14-pin round connector (manufactured by Binder, 423 Series)
Communications method with computer		RS-232C
Ambient temperature		Operating: 0 to 50 °C; Storage: -20 to 70 °C
Ambient humidity		Operating/storage: 5% to 95% (with no condensation)
Vibration resistance (malfunction)		10 to 55 Hz with a 0.7-mm double amplitude, 20 sweeps each in X, Y, and Z directions
Shock resistance (malfunction)		100 m/s <sup>2</sup> , 1,000 times each in X, Y, and Z directions
Degree of protection		IP65 (IEC 60529)
Cable (sold separately)	Power supply, output	0.5 mm <sup>2</sup> , 8-wire, mesh shield; maximum extension length: 20 m; allowable bending radius: 90 mm
	Connection to computer	Maximum extension length: 5 m; allowable bending radius: 112 mm
Materials		Case: Aluminum; Optical surface, display: Glass
Weight		Sensor only: Approximately 3.0 kg; In packaging: Approximately 4.4 kg
Accessories		Instruction manual, CSL Setup Software (CD-ROM), and mounting screws (four, M4×10)

## ■ Accessories (Optional)

### F39-LG1 Mounting Bracket

With Side Brackets

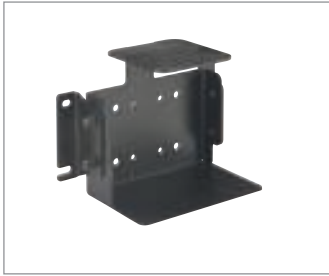


Photo shows mounting example.

Without Side Brackets

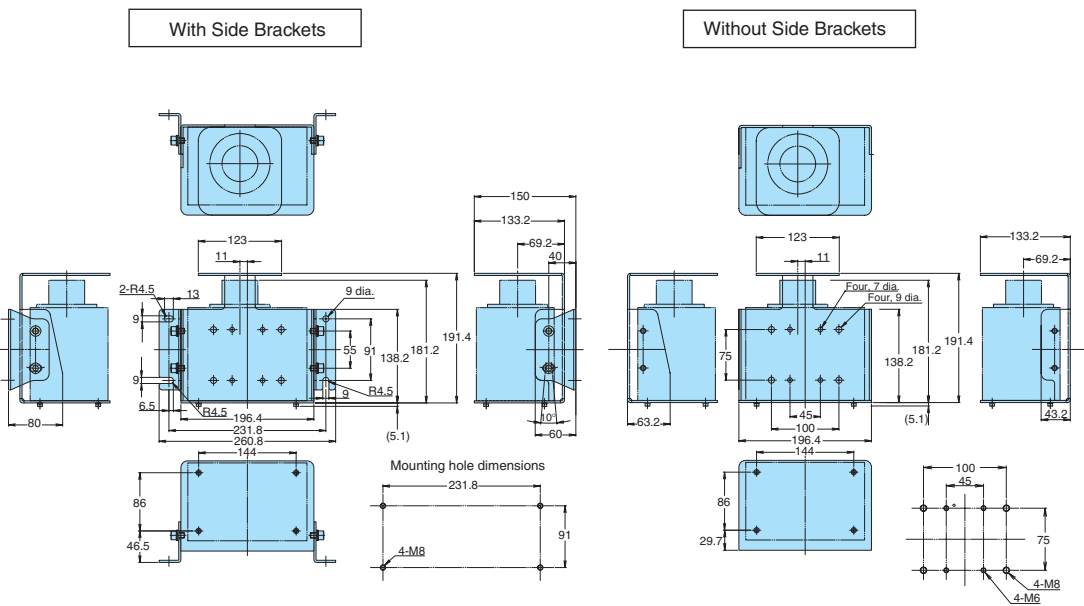


Photo shows mounting example.



## Dimensions

### F39-LG1



## ! WARNING!

- This catalog is provided as a guide for selecting the product. Do not use the product without first thoroughly reading and understanding the instruction manual provided with the product (Cat. No. SCHG-704), and the CSL Setup Software User's Manual (provided on the CD-ROM).
- Always have a qualified technician with appropriate training perform all of the following: Installing the F3G-C Safety Laser Scanner, setting up the designated monitoring area, and incorporating the product into the machine control system.
- The user must operate the F3G-C Safety Laser Scanner according to the performance specifications and installation environment described in the operation manuals. Perform risk assessment with all associated personnel and use the product according to the results of risk assessment.

## ■ Traceability

- To ensure the performance of the safety functions, the product must be inspected before use and at regular intervals according to the methods in the instruction manual provided with the product. To ensure delivery of additional information on the safe use of the product, an OMRON representative will need to confirm the installation location of the product and register the user with the product's serial number. We ask for your cooperation in the required procedures.

- The application examples in this catalog are provided for reference only. Always check the functions and safety of machinery and devices before using with the product.
- Before using the product under conditions which are not described in the manual or applying the product to nuclear control systems, railroad systems, aviation systems, vehicles, combustion systems, medical equipment, amusement machines, safety equipment, and other systems, machines, and equipment that may have a serious influence on lives and property if used improperly, consult your OMRON representative. Make sure that the ratings and performance characteristics of the product are sufficient for the systems, machines, and equipment, and be sure to provide the systems, machines, and equipment with double safety mechanisms.

### OMRON Corporation Industrial Automation Company

#### Application Sensors Division Sensing Devices and Components Division H.Q.

Shiokoji Horikawa, Shimogyo-ku,  
Kyoto, 600-8530 Japan  
Tel: (81)75-344-7068  
Fax: (81)75-344-7107

#### Regional Headquarters

**OMRON EUROPE B.V.**  
Sensor Business Unit, Carl-Benz-Str. 4,  
D-71154 Nufringen, Germany  
Tel: (49)7032-811-0/Fax: (49)7032-811-199

**OMRON ELECTRONICS LLC**  
1 East Commerce Drive, Schaumburg, IL 60173 U.S.A.  
Tel: (1)847-843-7900/Fax: (1)847-843-8568

**OMRON ASIA PACIFIC PTE. LTD.**  
83 Clemenceau Avenue, #11-01, UE Square,  
239920 Singapore  
Tel: (65)6835-3011/Fax: (65)6835-2711

**OMRON CHINA CO., LTD. BEIJING OFFICE**  
Room 1028, Office Building, Beijing Capital Times Square,  
No. 88 West Chang'an Road, Beijing, 100031 China  
Tel: (86)10-8391-3005/Fax: (86)10-8391-3688

#### Authorized Distributor: